



O-Ring FACE SEAL FITTINGS

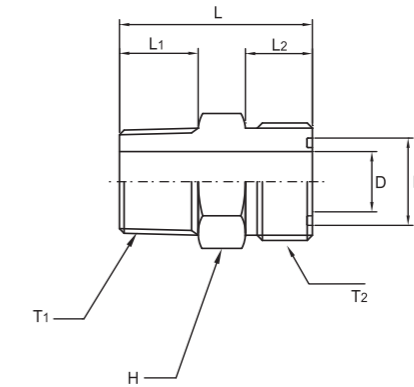


These special fittings are designed to meet working pressure up to 6000psi as SAE J1453 specification or S20C ~ S25C material. Sekwang produces two types of ORFS fittings with a standard O-ring groove and with a dovetail O-ring groove. Sekwang has excellent record of timely delivery for elbow, tee and cross type fittings.



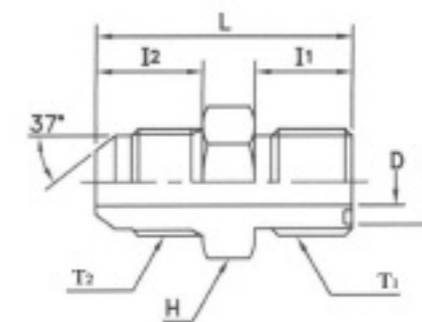
JA	JOBA	JOBB	JOBM	JOBN
P.141	P.141	P.142	P.143	P.144
JOBH	JOBL	JAW	JWOA	JAL
P.144	P.145	P.145	P.146	P.146
JLOA	JLOB	JS	JW	JL
P.147	P.147	P.148	P.148	P.149
JT	JPQ	JAQ	JNQ	QMT
P.149	P.150	P.150	P.151	P.151
JLQ	QLOA	JBTQ	JRTQ	OSN
P.152	P.152	P.153	P.153	P.154

O-RING, ADAPTER JA



Part No.	T ₁ (BSPT)	T ₂ (UNF)	D	B	H	L	L ₁	L ₂
JA 02R-09J	1/8	9/16	4.5	11.0	17	28	11	10
JA 04R-11J	1/4	11/16	6.5	12.6	19	34.5	14	11.5
JA 06R-11J	3/8	11/16	6.5	12.6	19	36.5	16	11.5
JA 06R-13J	3/8	13/16	9	15.77	22	38	16	13
JA 08R-11J	1/2	11/16	6.5	12.6	22	39.5	19	11.5
JA 08R-16J	1/2	1	11.5	19.0	27	44.5	19	15.5
JA 12R-19J	3/4	1 3/16	15.5	22.17	32	49	20	17
JA 16R-23J	1	1 7/16	20	26.87	41	54	23	18
JA 20R-27J	1 1/4	1 11/16	26	33.25	46	58	26	18

O-RING, ADAPTER JOBA



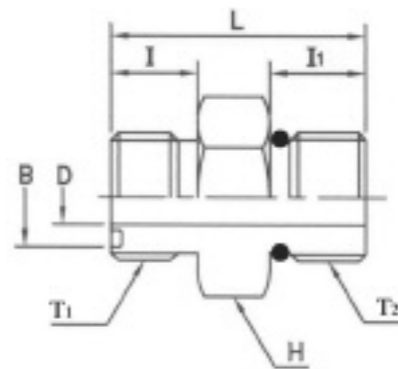
Part No.	T ₁ (UNF)	T ₂ (UNF)	D	B	h	L	L ₂	H
JOBA 09J-07U	9/16	7/16	4.5	11.0	32.5	10	15	17
JOBA 11J-09U	11/16	9/16	6.5	12.6	35.5	11	16	19
JOBA 13J-12U	13/16	3/4	9.5	15.77	40.5	13	18	22
JOBA 16J-14U	1	7/8	12	19.0	47	15.5	20	27
JOBA 19J-17U	1 3/16	1 1/16	15.3	22.17	52.5	17	22.5	32
JOBA 23J-21U	1 7/16	1 5/16	20	26.87	57	17.5	25	41
JOBA 27J-26U	1 11/16	1 5/8	26	33.25	61	17.5	28	46

O-RING FACE SEAL FITTINGS

O-RING FACE SEAL FITTINGS

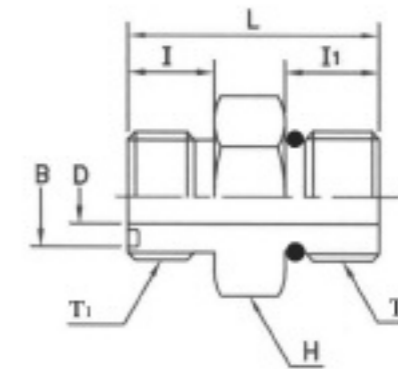


O-RING BOSS, ADAPTER JOB B



Part No.	T ₁ (UNF)	T ₂ (BSPP)	D	B	H	L	I	I ₁
JOB B 09J-04G	9/16	1/4	4.5	11.0	19	31	10	12
JOB B 09J-06G	9/16	3/8	4.5	11.0	22	31.3	10	12
JOB B 11J-06G	11/16	3/8	6.5	12.6	22	33.5	11	12
JOB B 11J-08G	11/16	1/2	6.5	12.6	27	35.5	11	14
JOB B 13J-08G	13/16	1/2	9.5	15.77	27	39.5	13	14
JOB B 13J-12G	13/16	3/4	9.5	15.77	36	41	13	16
JOB B 16J-08G	1	1/2	12	19.0	27	45.3	15.5	14
JOB B 16J-12G	1	3/4	12	19.0	36	45.5	15.5	16
JOB B 19J-12G	1 3/16	3/4	15.3	22.17	36	49	17	16
JOB B 19J-16G	1 3/16	1	15.3	22.17	41	51	17	18
JOB B 23J-16G	1 7/16	1	20	26.87	41	52	17.5	18
JOB B 23J-20G	1 7/16	1 1/4	20	26.87	50	54	17.5	20

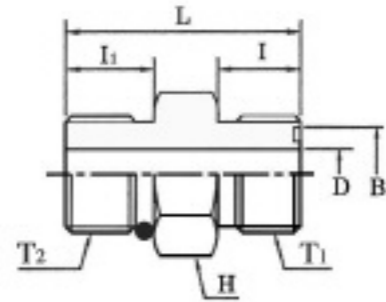
O-RING BOSS, ADAPTER JOB M



Part No.	T ₁ (UNF)	T ₂ (METRIC)	D	B	H	L	I	I ₁
JOB M 09J-10M	9/16	10×1	4.5	11.0	17	28	10	9
JOB M 09J-12M	9/16	12×1.5	4.5	11.0	17	29	10	11
JOB M 11J-14M	11/16	14×1.5	6.5	12.6	19	32.5	11	11
JOB M 11J-16M	11/16	16×1.5	6.5	12.6	22	34	11	12.5
JOB M 13J-18M	13/16	18×1.5	9.5	15.77	24	38.5	13	14
JOB M 13J-22M	13/16	22×1.5	9.5	15.77	27	40	13	15
JOB M 16J-22M	1	22×1.5	12	19.0	27	44	15.5	15
JOB M 16J-27M	1	27×2	12	19.0	32	46	15.5	18.5
JOB M 19J-27M	1 3/16	27×2	15.3	22.17	32	49	17	18.5
JOB M 19J-33M	1 3/16	33×2	15.3	22.17	41	52	17	18.5
JOB M 23J-33M	1 7/16	33×2	20	26.87	41	53	17.5	18.5
JOB M 23J-42M	1 7/16	42×2	20	26.87	50	55	17.5	19
JOB M 27J-42M	1 11/16	42×2	26	33.25	50	55	17.5	19
JOB M 27J-48M	1 11/16	48×2	26	33.25	55	55	17.5	22

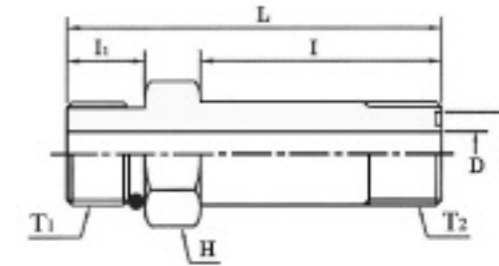


O-RING BOSS, ADAPTER JOBN



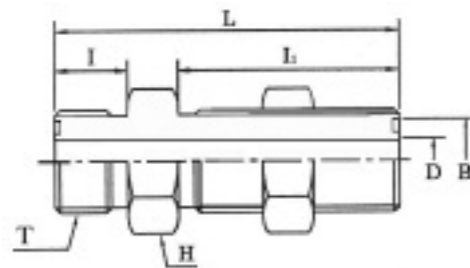
Part No.	T1 (UNF)	T2 (UNF)	D	B	H	L	I	I1
JOBN 09J-07U	9/16	7/16	4.5	11.0	16	28.5	10	9.5
JOBN 11J-09U	11/16	9/16	6.5	12.6	19	32	11	10
JOBN 13J-12U	13/16	3/4	9.5	15.77	22	36.5	13	11.5
JOBN 16J-14U	1	7/8	12	19.0	27	43	15.5	13
JOBN 19J-17U	1 3/16	1 1/16	15.3	22.17	32	48.5	17	15.5
JOBN 23J-21U	1 7/16	1 5/16	20	26.87	38	50.5	17.5	15.5
JOBN 27J-26U	1 11/16	1 5/8	26	33.25	50	52.5	17.5	15.5
JOBN 32J-30U	2	1 7/8	32	41.17	55	54	17.5	15.5

O-RING BOSS (LONG) JOBL



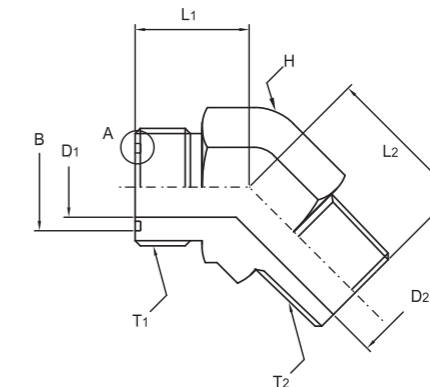
Part No.	T1 (UNF)	T2 (UNF)	D	B	H	L	I	I1
JOBL 07U-09J	7/16	9/16	4.5	11.0	16	52.5	34	9.5
JOBL 09U-11J	9/16	11/16	6.5	12.6	19	57.5	37	10
JOBL 12U-13J	3/4	13/16	9.5	15.77	22	68	44.5	11.5
JOBL 12U-16J	7/8	1	12	19.0	27	79	52.5	13
JOBL 17U-19J	1 1/16	1 3/16	15.3	22.17	32	95.5	64	15.5
JOBL 21U-23J	1 5/16	1 7/16	20	26.87	38	105	73	15.5
JOBL 26U-27J	1 5/8	1 11/16	26	33.25	50	121	86.5	15.5
JOBL 30U-32J	1 7/8	2	32	41.17	55	133.5	97	15.5

BULK HEAD/ADAPTER JOBH



Part No.	T (UNF)	D	B	H	L	I	I1
JOBH-09J	9/16	4.5	11.0	20.6	48.5	10	31.5
JOBH-11J	11/16	6.5	12.6	25.4	54	11	34
JOBH-13J	13/16	9.5	15.77	28.5	58.5	13	36.5
JOBH-16J	1	12	19.0	32	66.5	15.5	40.5
JOBH-19J	1 3/16	15.3	22.17	38	69	17	41.5
JOBH-23J	1 7/16	20	26.87	46	70	17.5	42
JOBH-27J	1 11/16	26	33.25	50	70	17.5	42
JOBH-32J	2	32	41.17	60	70	17.5	42

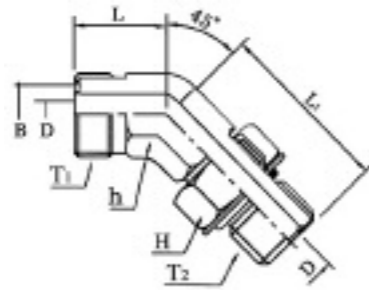
45° O-RING ELBOW JAW



Part No.	T1 (UNF)	T2 (BSPT)	D1	B	D2	H	L1	L2
JAW 09J-02R	9/16	1/8	4.5	11	4.5	14	16	18
JAW 11J-04R	11/16	1/4	6.5	12.6	5.5	19	19	23.5
JAW 11J-06R	11/16	3/8	6.5	12.6	9	19	19	26
JAW 13J-06R	13/16	3/8	9.5	15.77	9	19	20.5	26
JAW 13J-08R	13/16	1/2	9.5	15.77	11.5	22	23	30
JAW 19J-12R	1 3/16	3/4	15.5	22.17	15.5	35	29	38
JAW 23J-16R	1 7/16	1	20	26.87	20	35	30	41
JAW 27J-20R	1 11/16	1 1/4	26	33.25	26	44	45	48

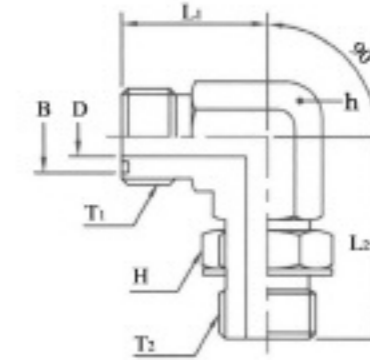


45° ELBOW, LOCK NUT
JWOA



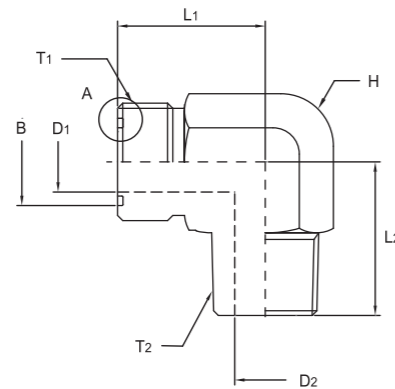
Part No.	T ₁ (UNF)	T ₂ (UNF)	D	B	h	H	L	L ₁
JWOA 09J-07U	9/16	7/16	4.5	11.0	14	16	16	26.5
JWOA 11J-09U	11/16	9/16	6.5	12.6	19	19	19	33
JWOA 13J-12U	13/16	3/4	9.5	15.77	19	24	20.5	36.5
JWOA 16J-14U	1	7/8	12	19.0	27	27	23.5	43
JWOA 19J-17U	1 3/16	1 1/16	15.3	22.17	35	32	26	46
JWOA 23J-21U	1 7/16	1 5/16	20	26.87	44	38	30	48.5
JWOA 27J-26U	1 11/16	1 5/8	26	33.25	44	50	32	48.5
JWOA 32J-30U	2	1 7/8	32	41.17	50	55	37	48.5

90° ELBOW, LOCK NUT
JLOA



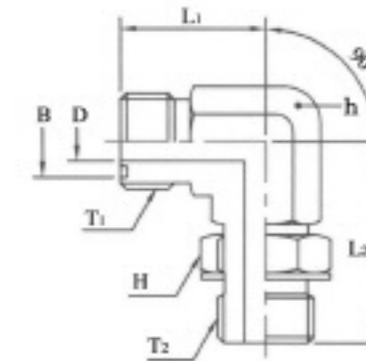
Part No.	T ₁ (UNF)	T ₂ (UNF)	D	B	h	H	L ₁	L ₂
JLOA 09J-07U	9/16	7/16	4.5	11.0	14	16	21.5	26
JLOA 11J-09U	11/16	9/16	6.5	12.6	19	19	25	34.5
JLOA 13J-12U	13/16	3/4	9.5	15.77	19	24	28	36.5
JLOA 16J-14U	1	7/8	12	19.0	27	27	33.5	45.5
JLOA 19J-17U	1 3/16	1 1/16	15.3	22.17	32	32	37.5	52
JLOA 23J-21U	1 7/16	1 5/16	20	26.87	36	38	41.5	57
JLOA 27J-26U	1 11/16	1 5/8	26	33.25	41	50	44.5	57
JLOA 32J-30U	2	1 7/8	32	41.17	50	55	48.5	64

90° O-RING ELBOW
JAL



Part No.	T ₁ (UNF)	T ₂ (BSPT)	D ₁	B	D ₂	H	L ₁	L ₂
JAL 09J-04U	9/16	1/4	4.5	11.0	5.5	14	21.5	25
JAL 09J-06U	9/16	3/8	4.5	11.0	9	19	23.5	29
JAL 11J-06U	11/16	3/8	6.5	12.6	9	19	25	29
JAL 13J-08U	13/16	1/2	9.5	15.77	11.5	22	28	34
JAL 16J-12U	1	3/4	12	19.0	15.5	27	33.5	38
JAL 19J-12U	1 3/16	3/4	15.5	22.17	15.5	30	37.5	39
JAL 23J-16U	1 7/16	1	27	26.87	20	35	42	45
JAL 27J-20U	1 11/16	1 1/4	26	33.25	27.5	41	44.5	57

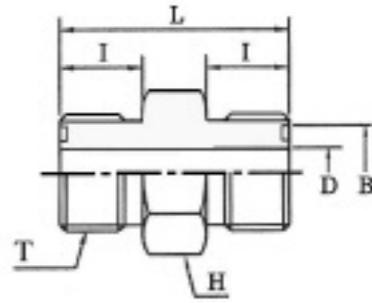
90° ELBOW, LOCK NUT
JLOB



Part No.	T ₁ (UNF)	T ₂ (BSPP)	D	B	h	H	L ₁	L ₂
JLOB 09J-04G	9/16	1/4	4.5	11.0	14	19	21.5	35
JLOB 09J-06G	9/16	3/8	4.5	11.0	19	22	23.5	38
JLOB 11J-06G	11/16	3/8	6.5	12.6	19	22	25	38
JLOB 11J-08G	11/16	1/2	6.5	12.6	22	27	28	48
JLOB 13J-08G	13/16	1/2	9.5	15.77	22	27	30	48
JLOB 13J-12G	13/16	3/4	9.5	15.77	27	32	33.5	51.5
JLOB 16J-08G	1	1/2	12	19.0	27	27	33.5	48
JLOB 16J-12G	1	3/4	12	19.0	27	32	33.5	51.5
JLOB 19J-12G	1 3/16	3/4	15.3	22.17	30	32	37.5	51.5
JLOB 19J-16G	1 3/16	1	15.3	22.17	33	41	38	58.5
JLOB 23J-16G	1 7/16	1	20	26.87	36	41	41.5	58.5
JLOB 27J-20G	1 11/16	1 1/4	26	33.25	41	50	44.5	60.5

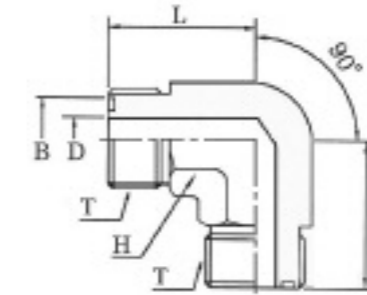


UNION, ADAPTER
JS



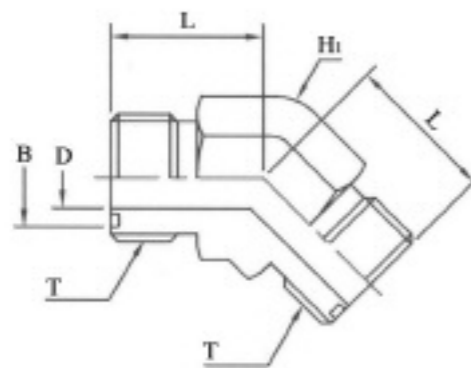
Part No.	T (UNF)	D	B	H	L	I
JS-09J	9/16	4.5	11.0	27.5	10	16
JS-11J	11/16	6.5	12.6	31	11	19
JS-13J	13/16	9.5	15.77	35.5	13	22
JS-16J	1	12	19.0	42.5	15.5	27
JS-19J	1 3/16	15.3	22.17	47	17	32
JS-23J	1 7/16	20	26.87	49.5	17.5	38
JS-27J	1 11/16	26	33.25	51.5	17.5	46
JS-32J	2	32	41.17	53	17.5	55

90° ELBOW, UNION
JL



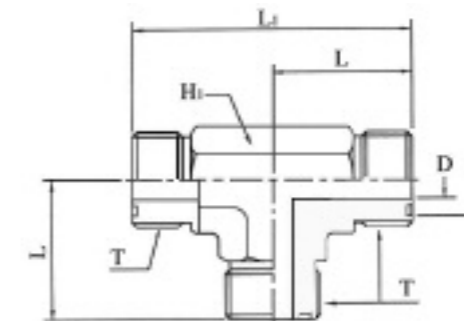
Part No.	T (UNF)	D	B	H	L
JL-09J	9/16	4.5	11.0	14	21.5
JL-11J	11/16	6.5	12.6	19	25
JL-13J	13/16	9.5	15.77	19	28
JL-16J	1	12	19.0	27	33.5
JL-19J	1 3/16	15.3	22.17	32	37.5
JL-23J	1 7/16	20	26.87	36	41.5
JL-27J	1 11/16	26	33.25	41	44.5
JL-32J	2	32	41.17	50	49

45° ELBOW, UNION
JW



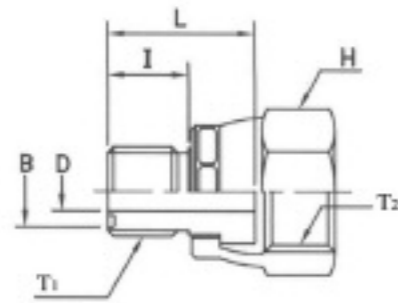
Part No.	T (UNF)	D	B	H	L
JW-09J	9/16	4.5	11.0	14	16
JW-11J	11/16	6.5	12.6	19	19
JW-13J	13/16	9	15.77	19	20.5
JW-16J	1	12	19.0	27	23.5
JW-19J	1 3/16	15.3	22.17	30	26
JW-23J	1 7/16	20	26.87	36	30
JW-27J	1 11/16	26	33.25	41	32

TEE, UNION
JT



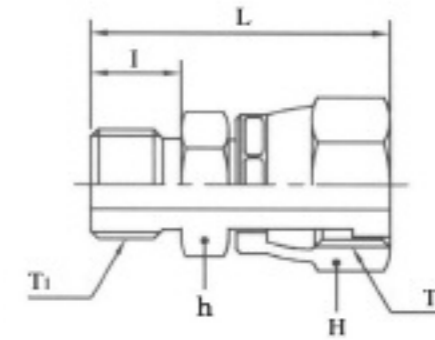
Part No.	T (UNF)	D	B	H	L	L ₁
JT-09J	9/16	4.5	11.0	14	21.5	43
JT-11J	11/16	6.5	12.6	19	25	50
JT-13J	13/16	9.5	15.77	19	28	56
JT-16J	1	12	19.0	27	33.5	66.5
JT-19J	1 3/16	15.3	22.17	32	37.5	75
JT-23J	1 7/16	20	26.87	36	41.5	83
JT-27J	1 11/16	26	33.25	41	44.5	89
JT-32J	2	32	41.17	50	48.5	97

ADAPTOR, ORFS SWIVEL
JPQ



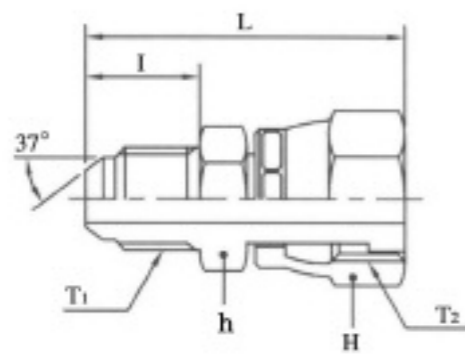
Part No.	T ₁ (UNF)	T ₂ (UNF)	D	B	H	L	I
JPQ 09J-11J	9/16	11/16	4.5	11.0	22	20	10
JPQ 09J-13J	9/16	13/16	4.5	11.0	24	22	10
JPQ 11J-13J	11/16	13/16	6.5	12.6	24	23	11
JPQ 11J-16J	11/16	1	6.5	12.6	30	24	11
JPQ 13J-16J	13/16	1	9.5	15.77	30	25.5	13
JPQ 13J-19J	13/16	1 3/16	9.5	15.77	36	27.5	13
JPQ 16J-19J	1	1 3/16	12	19.0	36	29.5	15.5
JPQ 16J-23J	1	1 7/16	12	19.0	41	32	15.5
JPQ 19J-23J	1 3/16	1 7/16	15.3	22.17	41	33	17
JPQ 19J-27J	1 3/16	1 11/16	15.3	22.17	50	33.5	17
JPQ 23J-27J	1 7/16	1 11/16	20	26.87	50	34	17.5
JPQ 23J-32J	1 11/16	2	26	33.25	60	34	17.5

O-RING BOSS, ORFS SWIVEL
JNQ



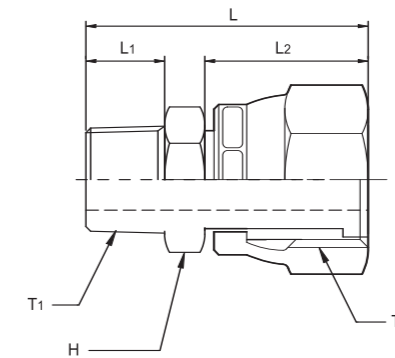
Part No.	T ₁ (UNF)	T ₂ (UNF)	h	H	L	I
JNQ 09J-07U	9/16	7/16	17	19	37.5	9.5
JNQ 11J-09U	11/16	9/16	19	22	41	10
JNQ 13J-12U	13/16	3/4	22	24	49	11.5
JNQ 16J-14U	1	7/8	27	30	54	13
JNQ 19J-17U	1 3/16	1 1/16	32	35	60	15.5
JNQ 23J-21U	1 7/16	1 5/16	41	41	67.5	15.5
JNQ 27J-26U	1 11/16	1 5/8	46	50	67.5	15.5

ADAPTER, ORFS SWIVEL
JAQ



Part No.	T ₁ (UNF)	T ₂ (UNF)	h	H	L	I
JAQ 09J-07U	9/16	7/16	17	19	38	15
JAQ 11J-09U	11/16	9/16	19	22	42	16
JAQ 13J-12U	13/16	3/4	22	24	48.5	18
JAQ 16J-14U	1	7/8	27	30	56	20
JAQ 19J-17U	1 3/16	1 1/16	32	35	63	22.5
JAQ 23J-21U	1 7/16	1 5/16	41	41	67	25
JAQ 27J-26U	1 11/16	1 5/8	46	50	71	28

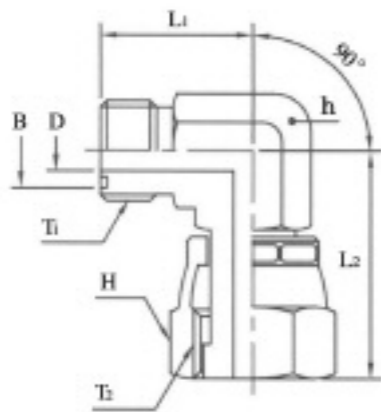
ORFS SWIVEL
QMT



Part No.	T ₁ (BSPT)	T ₂ (UNF)	h	H	L	L ₁	L ₂
QMT 09J-04R	1/4	9/16	14	19	36	14	16
QMT 11J-06R	3/8	11/16	19	22	41.5	16	18
QMT 13J-08R	1/2	13/16	22	24	49	19	21.5
QMT 16J-10R	1/2	1	27	30	52	19	24.5
QMT 19J-12R	3/4	1 3/16	32	35	56.5	20	26.5
QMT 23J-16R	1	1 7/16	36	41	62.5	23	27.5
QMT 27J-20R	1 1/4	1 11/16	43	50	68.5	26	30.5
QMT 32J-24R	1 1/2	2	55	60	75.5	29	30.5

90° ELBOW, ORFS SWIVEL

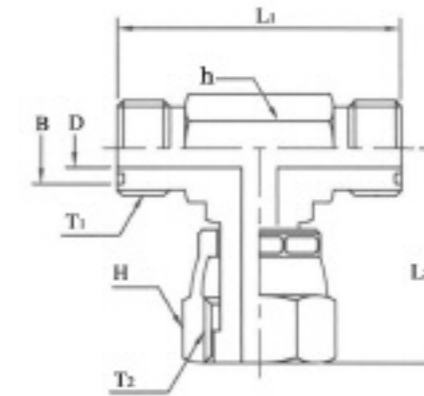
JLQ



Part No.	T ₁ (UNF)	T ₂ (UNF)	D	B	h	H	L ₁	L ₂
JLQ-09J	9/16	9/16	4.5	11.00	14	19	21.5	26.5
JLQ-11J	11/16	11/16	5.5	12.60	19	22	25	29
JLQ-13J	13/16	13/16	9.5	15.77	19	24	28	38
JLQ-16J	1	1	12	19.00	27	30	33.5	41
JLQ-19J	1 3/16	1 3/16	15.3	22.17	30	35	37.5	46.5
JLQ-23J	1 7/16	1 7/16	20	26.87	36	41	41.5	53.5
JLQ-27J	1 11/16	1 11/16	26	33.25	41	50	44.5	58

BRANCH TEE, ORFS SWIVEL

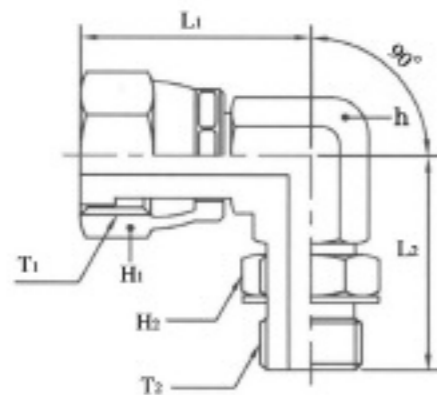
JBTQ



Part No.	T ₁ (UNF)	T ₂ (UNF)	D	B	h	H	L ₁	L ₂
JBTQ-09J	9/16	9/16	4.5	11.00	14	19	43	26.5
JBTQ-11J	11/16	11/16	6.5	12.60	19	22	50	29
JBTQ-13J	13/16	13/16	9.5	15.77	19	24	56	38
JBTQ-16J	1	1	12	19.00	27	30	67	41
JBTQ-19J	1 3/16	1 3/16	15.3	22.17	32	35	75	46.5
JBTQ-23J	1 7/16	1 7/16	20	26.87	36	41	83	53.5
JBTQ-27J	1 11/16	1 11/16	26	33.25	41	50	89	58

90° ELBOW, ORFS SWIVEL, LOCK NUT

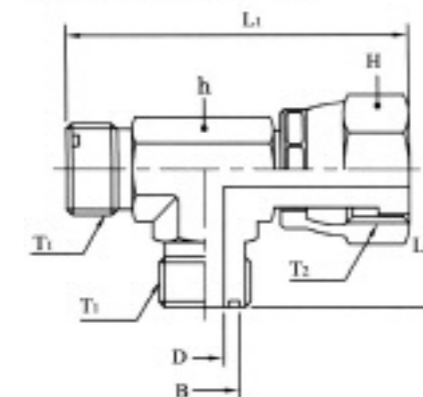
QLOA



Part No.	T ₁ (UNF)	T ₂ (UNF)	h	H ₁	H ₂	L ₁	L ₂
QLOA 09J-07U	9/16	7/16	14	19	16	26.5	32.5
QLOA 11J-09U	11/16	9/16	19	22	19	29	37
QLOA 13J-12U	13/16	3/4	19	24	24	38	40.5
QLOA 16J-14U	1	7/8	27	30	27	41	50
QLOA 19J-17U	1 3/16	1 1/16	30	35	32	46.5	55
QLOA 23J-21U	1 7/16	1 5/16	36	41	38	53.5	59.5
QLOA 27J-26U	1 11/16	1 5/8	41	50	50	58	62

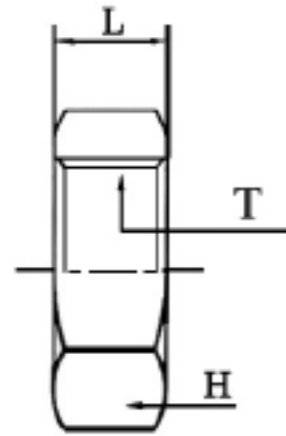
RUN TEE, ORFS SWIVEL

JRTQ



Part No.	T ₁ (UNF)	T ₂ (UNF)	D	B	h	H	L ₁	L ₂
JRTQ-09J	9/16	9/16	4.5	11.00	14	19	48	21.5
JRTQ-11J	11/16	11/16	6.5	12.60	19	22	54	25
JRTQ-13J	13/16	13/16	9.5	15.77	19	24	57	28
JRTQ-16J	1	1	12	19.00	27	30	68	33.5
JRTQ-19J	1 3/16	1 3/16	15.3	22.17	32	35	77	37.5
JRTQ-21J	1 7/16	1 7/16	20	26.87	36	41	90	41.5
JRTQ-23J	1 11/16	1 11/16	26	33.25	41	50	99	44.5

ORFS NUT
OSN



Part No.	T (UNF)	H	L
OSN-09J	9/16	22	7
OSN-11J	11/16	27	8
OSN-13J	13/16	30	9
OSN-16J	1	32	10.5
OSN-19J	1 3/16	38	10.5
OSN-23J	1 7/16	46	10.5
OSN-27J	1 11/16	50	10.5
OSN-32J	2	60	10.5