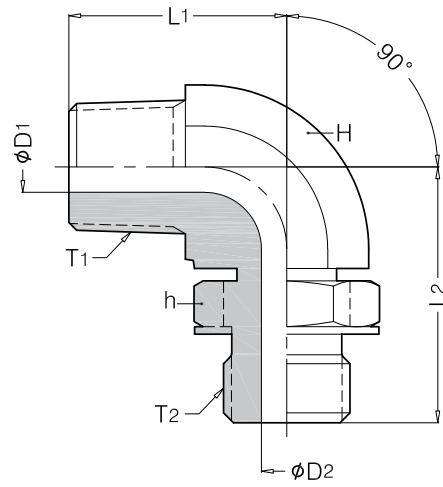


BENDING 90° O-RING ELBOW 'D' TYPE

R-ELOD



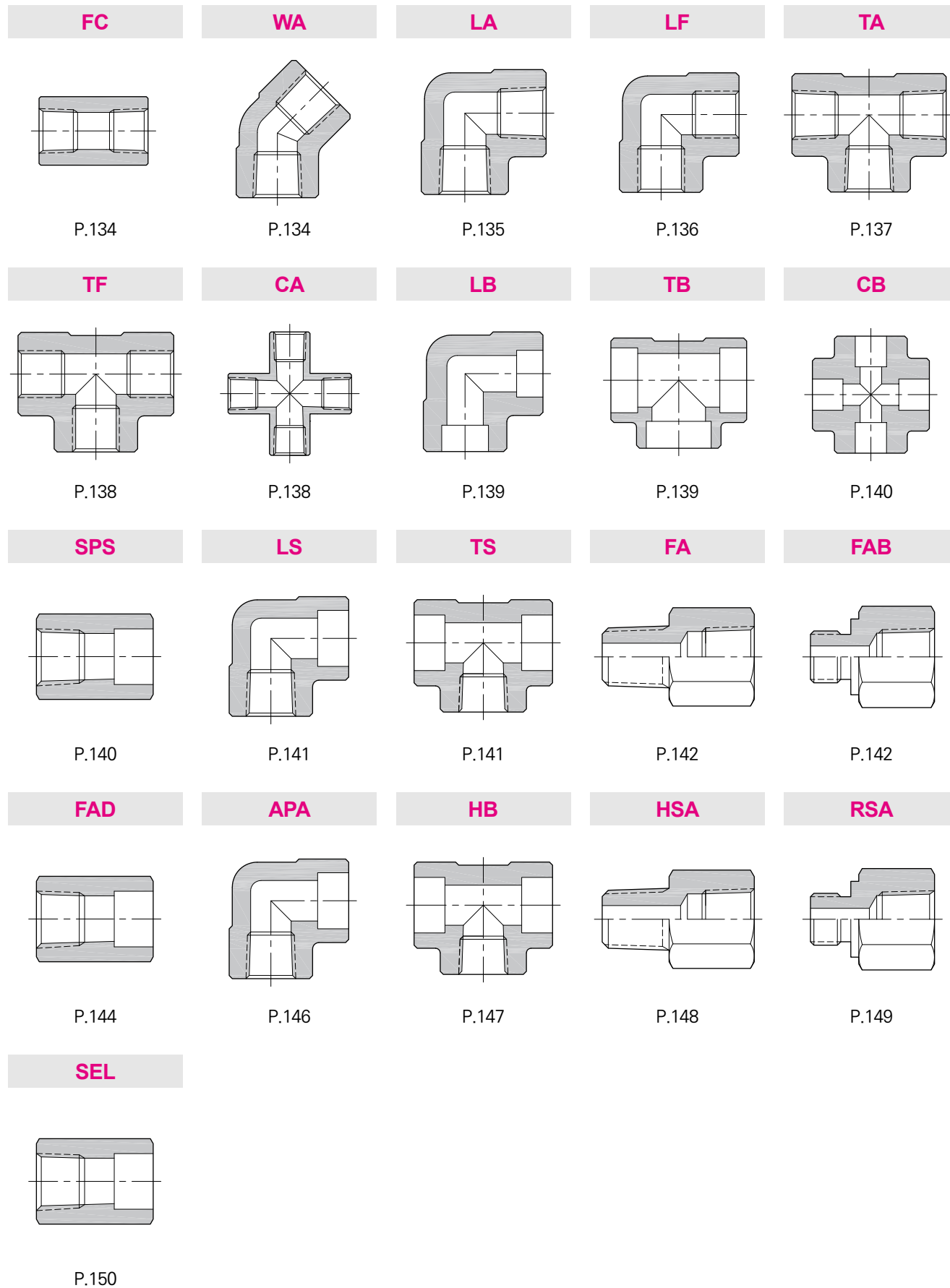
Part No.	T ₁ (BSPT)	T ₂ (BSPP)	D ₁	D ₂	H	L ₁	L ₂
R-ELOD 04R-04G	1/4	1/4	5	5	14	26	32
R-ELOD 06R-06G	3/8	3/8	8	8	19	30	37
R-ELOD 08R-08G	1/2	1/2	11	11	22	36	43
R-ELOD 12R-12G	3/4	3/4	15.5	15.5	27	43	49.5
R-ELOD 16R-16G	1	1	20	20	35	50	52

SOCKET WELDING & SCREWED TYPE POPE FITTINGS



Sekwang pipe fittings are usually made with carbonsteel forgings or bar stocks. They are produced to all internationally recognized standards.

Working Pressure & Screw Type 2000 PSI
 Welding Type SCH80 3000 PSI
 SCH 160 6000 PSI



DESIGNATION PART NUMBER SYSTEM

The symbols in the part number column on each page represent the shape and size of individual fittings.

Part Number Examples

Example 1	Example 2
<p>HB 12R - 04R R</p> <p>Name of Fitting (Hex Bushing) Part (1) Thread Designations(3/4") Thread Symbol(PT) Part (2) Thread Designations(1/4")</p>	<p>TA - 08 N</p> <p>Name of Fitting (Union tee) Thread Symbol (NPT) Part (1),(2),(3) Thread Designations(1/2")</p>

Pipe Thread Designations

Nom. Size	1/8	1/4	3/8	1/2	3/4	1	1 1/4	1 1/2	2
Designation	02R	04R	06R	08R	12R	16R	20R	24R	32R

Thread Symbols

- R** Taper Pipe Threads(PT : JIS B0203, ISO 7/1)
- N** American National Standard Taper Pipe Threads(NPT : ANSI B2.1)
- G** Parallel Pipe Threads(PF : JIS B0202, ISO 228/1)

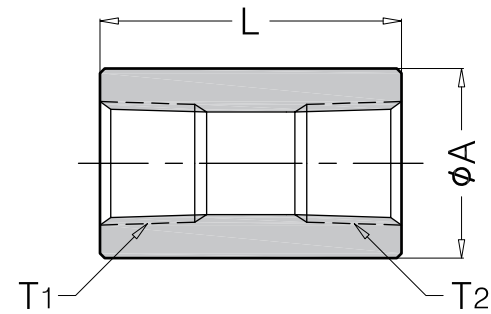
Material Indication System

Specify material by part number suffix letter : empty = Steel, -SS = Stainless Steel, -B = Brass

Example 1	Example 2	Example 3
LA - 04R X Carbon Steel	TA - 06 N-SS Stainless Steel	FAD 04 - 02 G - B Brass

FULL COUPLING

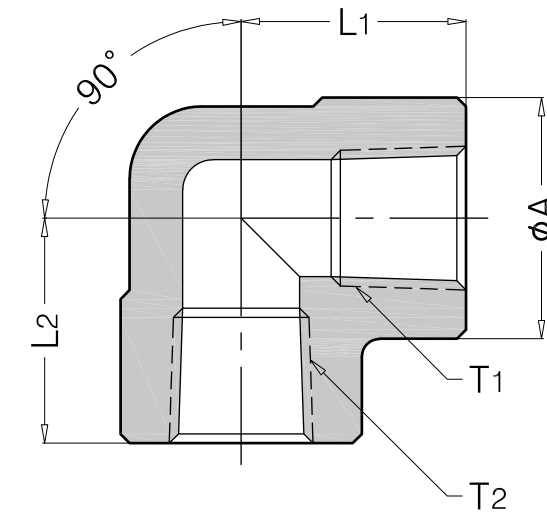
FC



Part No.	T (BSPT)	A	L
FC 02R	1/8	16	31
FC 04R	1/4	22	35
FC 06R	3/8	24	38
FC 08R	1/2	30	48
FC 12R	3/4	36	51
FC 16R	1	46	60
FC 20R	1 1/4	60	66
FC 24R	1 1/2	65	79
FC 32R	2	80	86

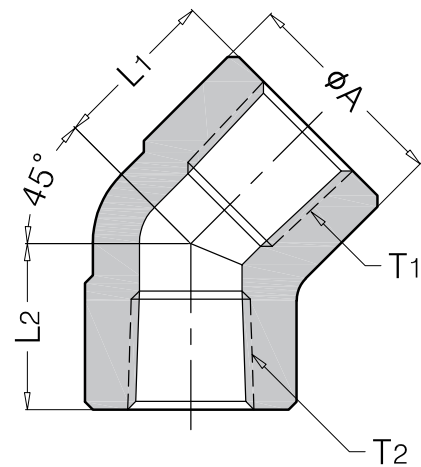
90° ELBOW

LA



45° ELBOW

WA

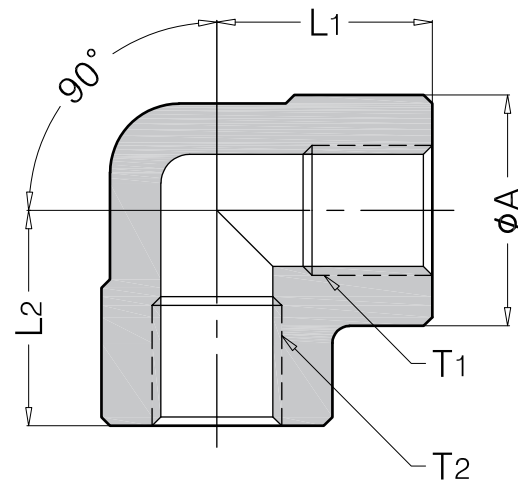


Part No.	T (BSPT/NPT)	A	L
WA 02R	1/8	20	18
WA 04R	1/4	23	20
WA 06R	3/8	27	21
WA 08R	1/2	33	25
WA 12R	3/4	39	27.5
WA 16R	1	47	35
WA 20R	1 1/4	57	46

Part No.	T (BSPT/NPT)	A	L
LA 02R	1/8	19	19.5
LA 04R	1/4	23	22.5
LA 06R	3/8	27	25
LA 06R-08R	1/2-3/8	33	29
LA 08R	1/2	33	29
LA 12R	3/4	39	34
LA 12R-08R	3/4-1/2	39	34
LA 12R-16N	1-3/4	47	38
LA 16R	1	47	38
LA 16R-12R	1-3/4	47	38
LA 20R	1 1/4	57	45
LA 24R	1 1/2	63	51
LA 32R	2	76	60

BSP FIXED FEMALE

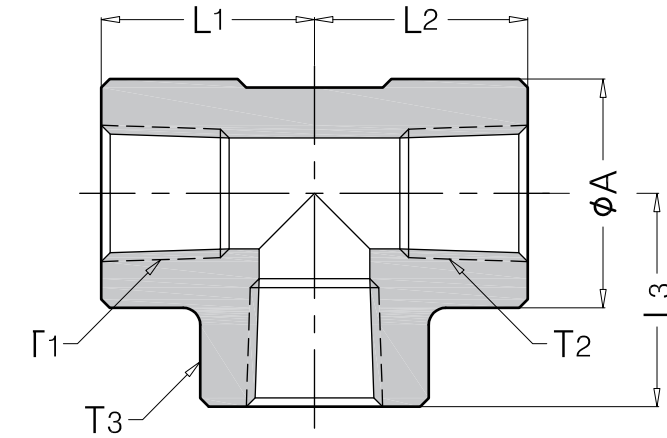
LF



Part No.	T (BSPT)	A	L
LF 02G	1/8	16	22.5
LF 04G	1/4	24	22.5
LF 06G	3/8	28	26
LF 08G	1/2	33	28.5
LF 12G	3/4	40	33
LF 16G	1	47	38.5
LF 20G	1 1/4	56	46
LF 24G	1 1/2	63	49

TEE

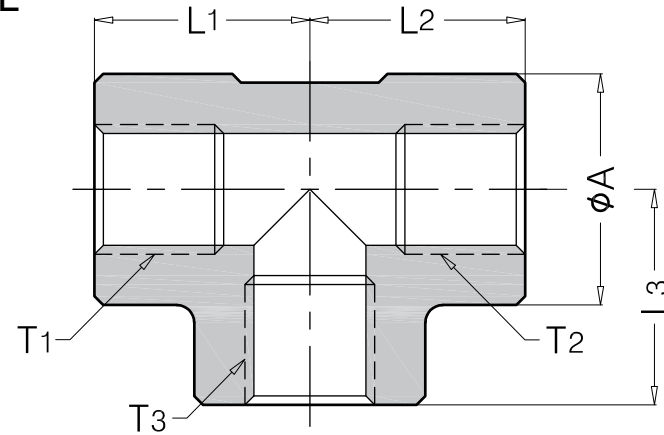
TA



Part No.	T (BSPT/NPT)	A	L
TA 02R	1/8	19	19.5
TA 04R	1/4	23	22.5
TA 06R	3/8	27	25
TA 06R-06R-06R	3/8-3/8-1/4	27	25
TA 08R	1/2	33	29
TA 08R-04R-08R	1/2-1/4-1/2	33	29
TA 08R-08R-04R	1/2-1/2-1/4	33	26
TA 08R-08R-06R	1/2-1/2-3/8	33	26-26-25
TA 12R	3/4	39	34
TA 12R-12R-06R	3/4-3/4-3/8	39	34
TA 16R	1	47	38
TA 20R	1 1/4	57	45
TA 24R	1 1/2	63	49
TA 32R	2	76	60

FIXED FEMALE TEE

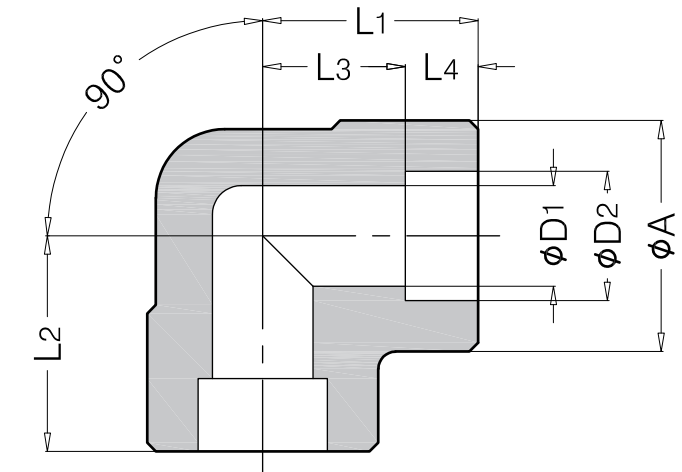
TF



Part No.	T (BSPT)	A	L
TF 02G	1/8	16	22
TF 04G	1/4	24	22
TF 06G	3/8	27	25
TF 08G	1/2	33	28.5
TF 12G	3/4	39	32.5
TF 16G	1	47	36.5
TF 20G	1 1/4	56	44
TF 24G	1 1/2	63	49

90° ELBOW

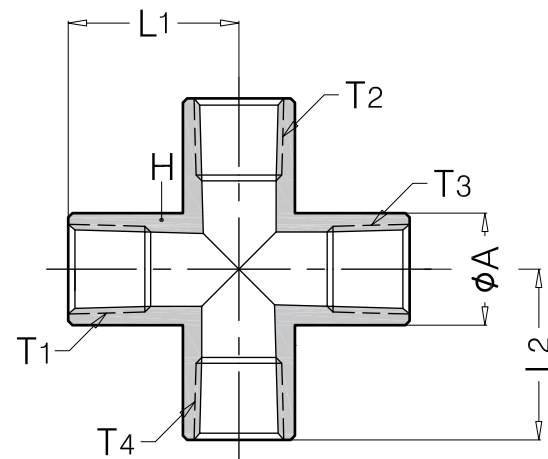
LB



Part No.	Nom. Size	L1(L2)	L4	D1	D2	A
LB 04-S80	1/4	22.5	11.4	9.4	14.3	23
LB 06-S80	3/8	25	11.5	12.7	17.8	27
LB 12-S80	3/4	34	14.9	21.4	27.7	39
LB 16-S80	1	38	15.8	27.2	34.5	47
LB 20-S80	1 1/4	45	18	35.5	43.2	56
LB 24-S80	1 1/2	51	19.2	41.2	49.1	63
LB 32-S80	2	60	21.9	52.7	61.1	76

CROSS

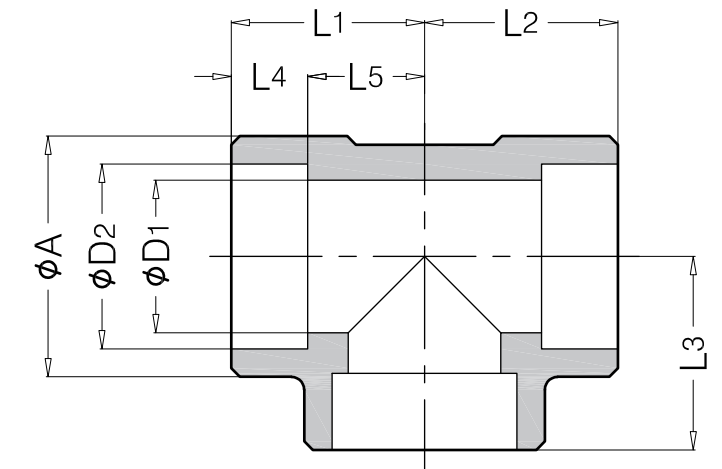
CA



Part No.	T (BSPT)	H	L
CA 02R	1/8	19	17
CA 04R	1/4	22	21
CA 06R	3/8	27	25
CA 08R	1/2	27	31
CA 12R	3/4	34	34
CA 16R	1	38	38
CA 20R	1 1/4	54	45
CA 24R	1 1/2	63	51
CA 32R	2	75	60

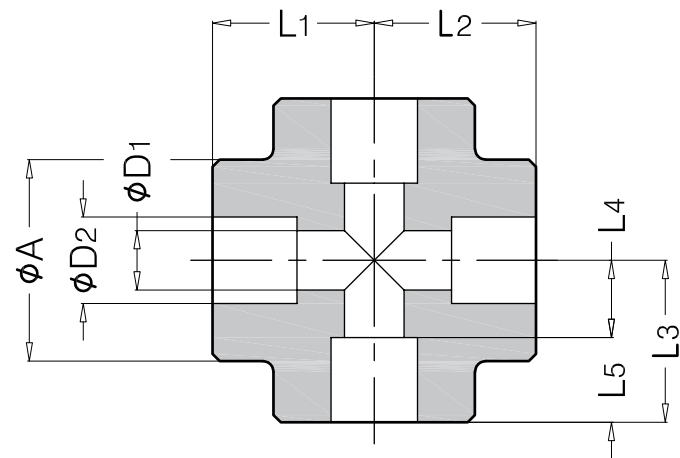
TEE

TB



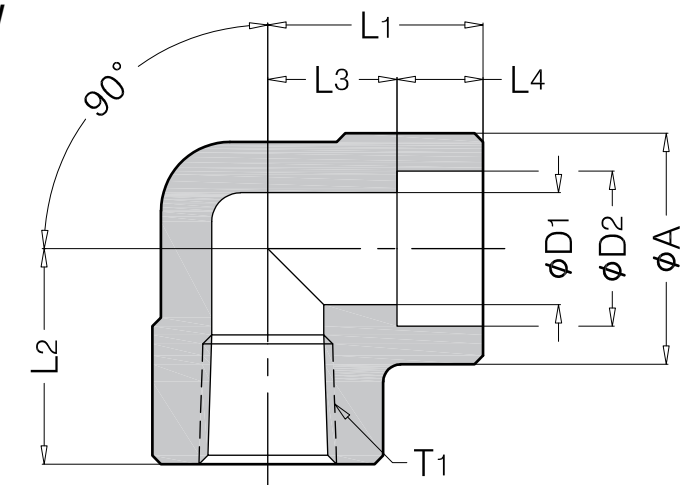
Part No.	Nom. Size	L1	L4	D1	D2	A
TB08-S80	1/2	29	13.1	16.1	22.2	33
TB12-S80	3/4	34	14.9	21.4	27.7	39
TB16-S80	1	38	15.8	27.2	34.5	47
TB20-S80	1 1/4	45	18	35.5	43.2	57
TB24-S80	1 1/2	51	19.2	41.2	49.1	63
TB32-S80	2	60	21.9	52.7	61.6	76

CROSS
CB



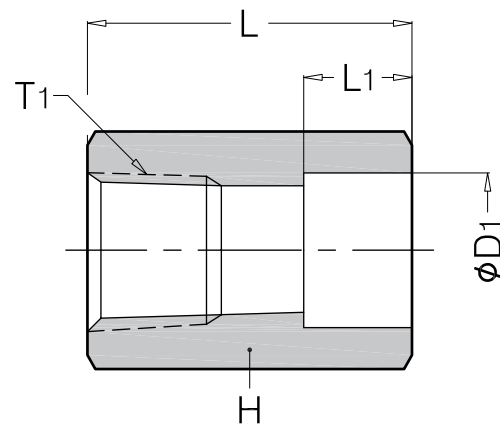
Part No.	Nom. Size	L1	L5	D1	D2	A
CB 16-S80	1	38	15.8	27.2	34.5	47
CB 32-S80	2	60	21.9	52.7	61.1	76

SPECIAL ELBOW
LS



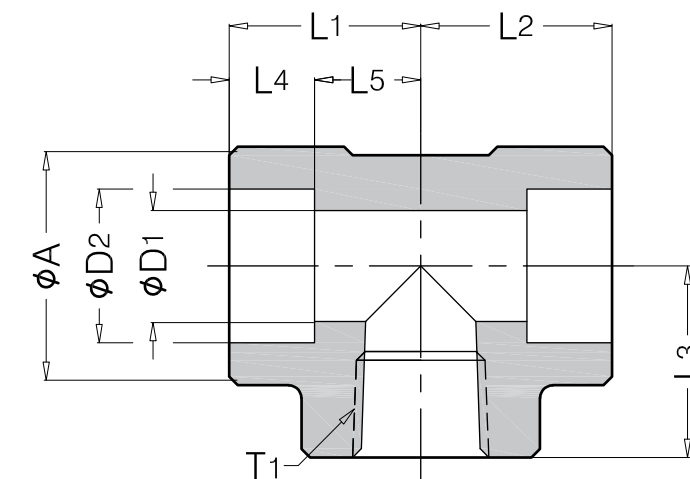
Part No.	T (BSPT)	L1	L4	D1	D2	A
LS 04R	1/4	22.5	11.4	9.4	14.3	23
LS 06R	3/8	25	11.5	12.7	17.8	27
LS 08R	1/4	29	13.1	16.1	22.2	33
LS 12R	3/4	34	14.9	21.4	27.7	39
LS 16R	1	38	15.8	27.2	34.5	47
LS 20R	1 1/4	45	18	35.5	43.2	57
LS 32R	2	60	21.9	52.7	61.1	76

SPECIAL ELBOW
SPS



Part No.	T (BSPT)	H	L	L1	D
SPS 04R	1/4	19	30	10	14.3
SPS 12R	3/4	35	43	13	27.7
SPS 20R	1 1/4	50	55	13	43.2

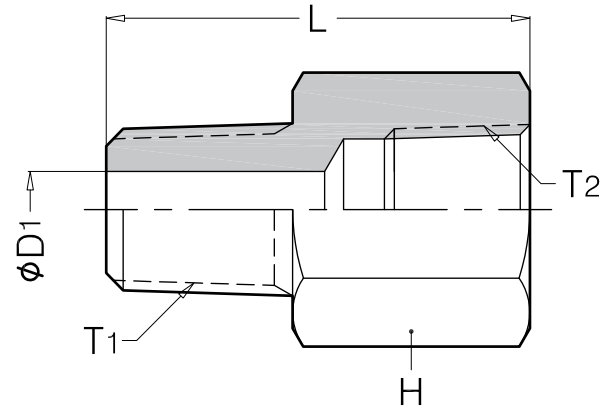
SPECIAL TEE
TS



Part No.	T (BSPT)	L1	L4	D1	D2	A
TS 12R	3/4	34	14.9	21.4	27.8	39

FEMALE ADAPTER 'A' TYPE

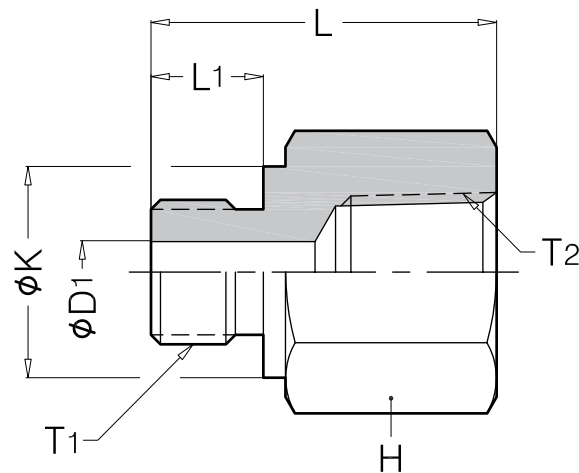
FA



Part No.	T (BSPT/NPT)	H	L	D1
FA 02R	1/8	14	25	4.5
FA 04R	1/4	19	31	7
FA 06R	3/8	22	37	9
FA 08R	1/2	27	44.5	11.5
FA 12R	3/4	35	50	15.5
FA 16R	1	41	58	20
FA 20R	1 1/4	50	67	26
FA 24R	1 1/2	55	72	33
FA 32R	2	70	79	43

FEMALE ADAPTER 'B' TYPE

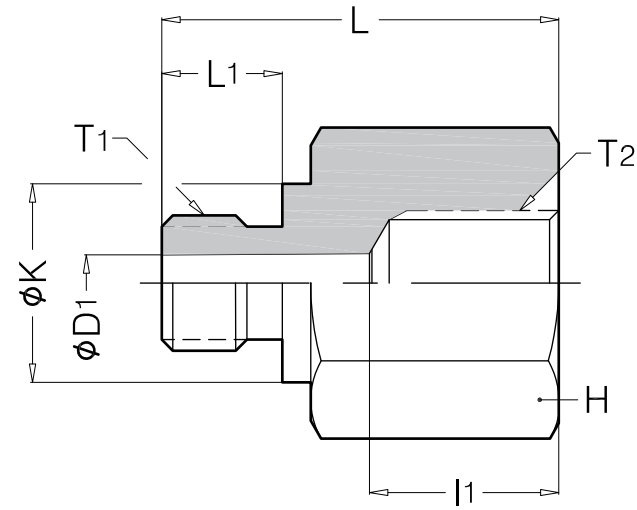
FAB



Part No.	T ₁ (BSPP)	T ₂ (BSPT)	H	L	L ₁	D ₁	K
FAB 02G-02R	1/8	1/8	14	22	9	4	14
FAB 04G-04R	1/4	1/4	19	33	12	6	19
FAB 06G-04R	3/8	1/4	22	35	12	8	21.5
FAB 06G-06R	3/8	3/8	22	35	12	8	22
FAB 06G-08R	3/8	1/2	27	40	12	8	22
FAB 08G-04R	1/2	1/4	27	36	14	11	27
FAB 08G-06R	1/2	3/8	27	35	15	8	27
FAB 08G-08R	1/2	1/2	27	42	14	12	26.6
FAB 12G-04R	3/4	1/4	32	39	16	15.5	32
FAB 12G-06R	3/4	3/8	32	39	16	15.5	32
FAB 12G-08R	3/4	1/2	32	45	16	16	32
FAB 12G-12R	3/4	3/4	35	47	16	16	35
FAB 16G-08R	1	1/2	41	46	18	20	41
FAB 16G-12R	1	3/4	41	46	18	20	41
FAB 16G-16R	1	1	41	55	18	22	41
FAB 20G-12R	1 1/4	3/4	50	32.1	20	22	50
FAB 20G-16R	1 1/4	1	50	44	20	22	49.6
FAB 20G-20R	1 1/4	1 1/4	50	48.6	18.6	27.5	50
FAB 24G-16R	1 1/2	1	55	49	22	33	55
FAB 24G-20R	1 1/2	1 1/4	55	64	22	33	55
FAB 24G-24R	1 1/2	1 1/2	55	66	22	33	55
FAB 04GED-02R	1/4	1/8	19	33	12	6	19
FAB 04GED-04R	1/4	1/4	19	32	12	5	19
FAB 06GED-04R	3/8	1/4	22	35	12	8	22
FAB 06GED-08R	3/8	1/2	27	40	12	8	21.8
FAB 08GED-06R	1/2	3/8	27	36	14	12	26.9
FAB 08GED-08R	1/2	1/2	27	42	14	12	26.9
FAB 12GED-04R	3/4	1/4	32	39	16.5	16	31.9
FAB 12GED-06R	3/4	3/8	32	42	16	16	32
FAB 12GED-08R	3/4	1/2	32	47	16	16	31.7
FAB 12GED-12R	3/4	3/4	35	47	16	16	31.7
FAB 16GED-08R	1	1/2	41	33.1	18	20	39.9
FAB 16GED-12R	1	3/4	41	46	18	20	39.9
FAB 16GED-16R	1	1	41	53	18	20	39.9
FAB 20GED-12R	1 1/4	3/4	50	38	20	24	50
FAB 20GED-16R	1 1/4	1	50	53	20	27	49.9
FAB 20GED-20R	1 1/4	1 1/4	50	61	20	25	50
FAB 24GED-12R	1 1/2	3/4	55	42	22	26	55
FAB 24GED-16R	1 1/2	1	55	42	22	30	55
FAB 24GED-20R	1 1/2	1 1/4	55	58	22	33	55
FAB 24GED-24R	1 1/2	1 1/2	55	66	22	32	54.9
FAB 32GED-20R	2	1 1/4	75	64	24	40	71
FAB 32GED-32R	2	2	74	60	24	40	71

FEMALE ADAPTER 'D' TYPE

FAD

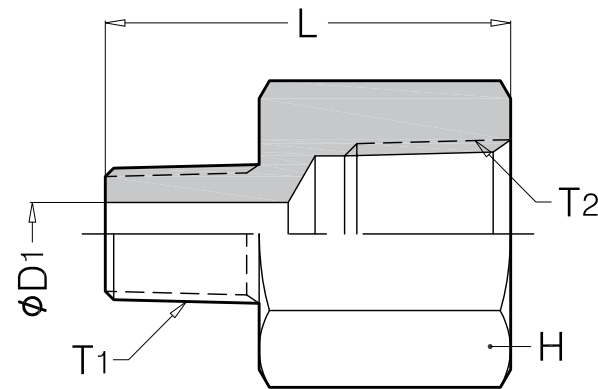


FAD 04GED-02G	1/4	1/8	19	30	12	5	19
FAD 04GED-04G	1/4	1/4	19	32	12	5	18.9
FAD 06GED-04G	3/8	1/4	22	31	12	9	22
FAD 06GED-06G	3/8	3/8	24	36	12	8	21.9
FAD 08GED-04G	1/2	1/4	27	36	14	11	26.9
FAD 08GED-08G	1/2	1/2	27	36	14	12	26.9
FAD 12GED-04G	3/4	1/4	35	39	16	15.5	31.9
FAD 12GED-08G	3/4	1/2	32	42	16	16	32
FAD 16GED-08G	1	1/2	41	45	18	17.5	39.9
FAD 16GED-12G	1	3/4	41	47	18	20	39.9
FAD 20GED-12G	1 1/4	3/4	50	32	20	24	49.7
FAD 20GED-16G	1 1/4	1	50	53	20	27	50
FAD 24GED-16G	1 1/2	1	55	55.5	22	33	55
FAD 24GED-20G	1 1/2	1 1/4	55	58	22	33	55

Part No.	T ₁ (BSPP)	T ₂ (BSPP)	H	L	L ₁	D ₁	K
FAD 02G-04G	1/8	1/4	19	28	8.5	4.5	14
FAD 02G-06G	1/8	3/8	22	32.5	8.5	4.5	14
FAD 04G-02G	1/4	1/8	19	28	12	5.5	18.6
FAD 04G-04G	1/4	1/4	22	31	12	5.5	18.6
FAD 04G-06G	1/4	3/8	24	36	12	5.5	18.6
FAD 04G-08G	1/4	1/2	27	41	12	5.5	21
FAD 04G-12G	1/4	3/4	36	43	12	5	18
FAD 06G-04G	3/8	1/4	22	30	12	8	21.6
FAD 06G-08G	3/8	1/2	30	41	12	8	21.6
FAD 06G-12G	3/8	3/4	36	44	12	8	22
FAD 08G-04G	1/2	1/4	27	36	14	12	26.6
FAD 08G-06G	1/2	3/8	27	36	14	12	26.6
FAD 08G-08G	1/2	1/2	30	43	14	11.5	26.6
FAD 08G-12G	1/2	3/4	36	46	14	12	26.6
FAD 08G-16G	1/2	1	41	49	14	12	26
FAD 12G-04G	3/4	1/4	32	38	16	16	31.5
FAD 12G-06G	3/4	3/8	32	42	16	16	31.5
FAD 12G-08G	3/4	1/2	32	41	16	16	31.5
FAD 12G-16G	3/4	1	41	51	16	16	31.5
FAD 16G-04G	1	1/4	41	29	18	20	39
FAD 16G-08G	1	1/2	41	29	18	20	39
FAD 16G-12G	1	3/4	41	47	18	20	40.5
FAD 16G-20G	1	1 1/4	55	57	18	20	40.5
FAD 20G-12G	1 1/4	3/4	50	32	20	25	49
FAD 20G-16G	1 1/4	1	50	52	20	25	49
FAD 20G-24G	1 1/4	1 1/2	60	60	20	25	49
FAD 24G-08G	1 1/2	1/2	55	36	22	25	55
FAD 24G-12G	1 1/2	3/4	55	36	22	25	55
FAD 24G-20G	1 1/2	1 1/4	55	58	22	33	55

REDUCER 'A' TYPE

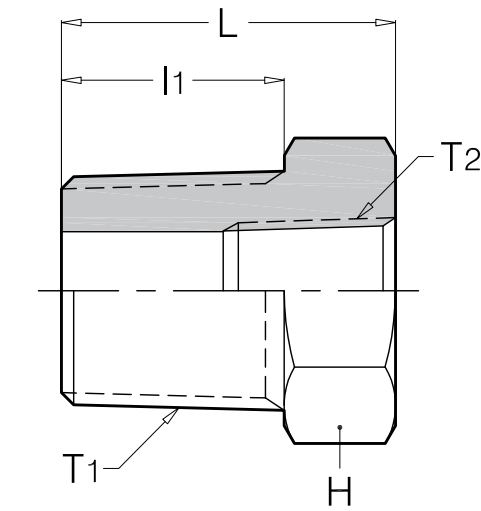
APA



Part No.	T ₁ (BSPT/NPT/PF)	T ₂ (BSPT/NPT/PF)	H	L	D1
APA 02R-04R	1/8	1/4	19	29	4.5
APA 02R-06R	1/8	3/8	22	35	4.5
APA 04R-06R	1/4	3/8	22	37	5.5
APA 04R-08R	1/4	1/2	27	42	5.5
APA 04R-12R	1/4	3/4	35	44	5.5
APA 06R-08R	3/8	1/2	27	44	9
APA 06R-12R	3/8	3/4	35	44	9
APA 06R-16R	3/8	1	41	47	9
APA 08R-12R	1/2	3/4	35	44	11.5
APA 08R-16R	1/2	1	41	52	11.5
APA 12R-16R	3/4	1	41	53	15.5
APA 12R-20R	3/4	1 1/4	50	67	15.5
APA 16R-20R	1	1 1/4	50	64	20
APA 16R-24R	1	1 1/2	55	64	20
APA 20R-24R	1 1/4	1 1/2	55	69	27.5
APA 20R-32R	1 1/3	2	70	72	27.5
APA 24R-32R	1 1/2	2	70	75	33

HEX BUSHING

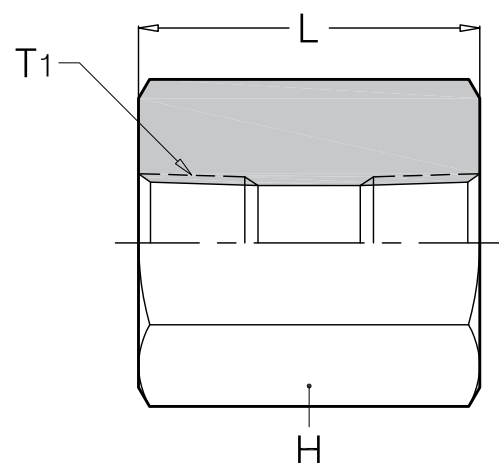
HB



Part No.	T ₁ (BSPT/NPT/PF)	T ₂ (BSPT/NPT/PF)	H	L	l ₁
HB 04R-02R	1/4	1/8	14	21	14
HB 06R-02R	3/8	1/8	19	24	16
HB 06R-04R	3/8	1/4	18	24	16
HB 08R-02R	1/2	1/8	22	29	19
HB 08R-04R	1/2	1/4	22	29	19
HB 08R-06R	1/2	3/8	22	29	19
HB 12R-02R	3/4	1/8	27	30	20
HB 12R-04R	3/4	1/4	27	31.5	20
HB 12R-06R	3/4	3/8	27	31.5	20
HB 12R-08R	3/4	1/2	27	31.5	20
HB 16R-04R	1	1/4	35	35	23
HB 16R-06R	1	3/8	35	35	23
HB 16R-08R	1	1/2	35	35	23
HB 16R-12R	1	3/4	35	35	23
HB 20R-08R	1 1/4	1/4	43	41.4	25.4
HB 20R-12R	1 1/4	3/4	43	41.4	25.4
HB 20R-16R	1 1/4	1	43	41.4	25.4
HB 24R-08R	1 1/2	1/2	50	41.4	25.4
HB 24R-12R	1 1/2	3/4	50	41.4	25.4
HB 24R-16R	1 1/2	1	50	41.4	25.4
HB 24R-20R	1 1/2	1 1/4	50	41.4	25.4
HB 32R-12R	2	3/4	63.5	51	31
HB 32R-16R	2	1	63.5	51	31
HB 32R-20R	2	1 1/4	63.5	51	31
HB 32R-24R	2	1 1/2	63.5	51	31
HB 48R-32R	3	2	93	63	42

HEX SOCKET

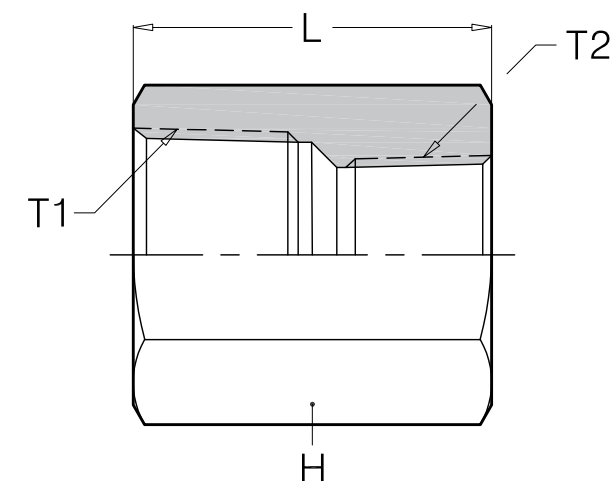
HSA



Part No.	T ₁ (BSPT/NPT/PF)	H	L
HSA 02R	1/8	14	25
HSA 04R	1/4	19	27
HSA 06R	3/8	22	30
HSA 08R	1/2	27	41
HSA 12R	3/4	35	42
HSA 16R	1	41	50
HSA 20R	1 1/4	50	55
HSA 24R	1 1/2	55	55
HSA 32R	2	70	61
HSA 40R	2 1/4	95	75

REDUCING SOCKET

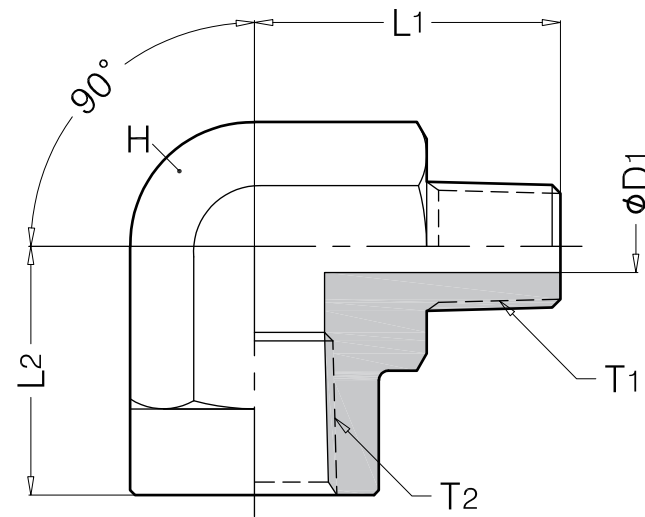
RSA



Part No.	T ₁ (BSPT)	T 2(BSPT)	H	L
RSA 04R-02R	1/4	1/8	19	30
RSA 06R-02R	3/8	1/8	22	30
RSA 06R-04R	3/8	1/4	22	30
RSA 08R-04R	1/2	1/4	27	40
RSA 08R-06R	1/2	3/8	27	40
RSA 12R-04R	3/4	1/4	35	42
RSA 12R-06R	3/4	3/8	35	42
RSA 12R-08R	3/4	1/2	35	42
RSA 16R-06R	1	3/8	41	50
RSA 16R-08R	1	1/2	41	50
RSA 16R-12R	1	3/4	41	50
RSA 20R-12R	1 1/4	3/4	50	55
RSA 20R-16R	1 1/4	1	50	55
RSA 24R-16R	1 1/2	1	55	55
RSA 32R-16R	2	1	70	64
RSA 32R-20R	2	1 1/4	70	64
RSA 32R-24R	2	1 1/2	70	64

90° SERVICE ELBOW

SEL



Part No.	T ₁ (BSPT)	T ₂ (BSPT)	H	L ₁	L ₂	D ₁
SEL 02R-02R	1/8	1/8	14	21	19	4.5
SEL 02R-04R	1/8	1/4	19	27	22	4.5
SEL 02R-06R	1/8	3/8	24	29	27	4.5
SEL 04R-04R	1/4	1/4	19	27	22	5.5
SEL 04R-06R	1/4	3/8	24	32	26	5.5
SEL 06R-04R	3/8	1/4	19	30	22	9
SEL 06R-06R	3/8	3/8	24	33	27	9
SEL 06R-08R	3/8	1/2	27	35	30	9
SEL 08R-06R	1/2	3/8	27	38	30	11.5
SEL 08R-08R	1/2	1/2	27	37	30	11.5
SEL 08R-12R	1/2	3/4	35	43	34	11.5
SEL 12R-12R	3/4	3/4	35	44	34	15.5
SEL 12R-16R	3/4	1	41	48	40	15.5
SEL 16R-12R	1	3/4	41	48	40	21
SEL 16R-16R	1	1	41	48	40	21
SEL 20R-20R	1 1/4	1 1/4	50	65	45	26
SEL 24R-24R	1 1/2	1 1/2	60	65	59	33
SEL 32R-32R	2	2	70	72	60	43



O-Ring FACE SEAL FITTINGS



These special fittings are designed to meet working pressure up to 6000psi as SAE J1453 specification or S20C ~ S25C material. Sekwang produces two types of ORFS fittings with a standard O-ring groove and with a dovetail O-ring groove. Sekwang has excellent record of timely delivery for elbow, tee and cross type fittings.